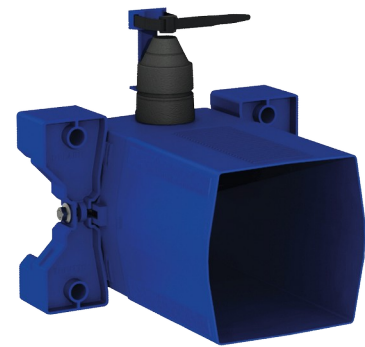


Recessed waterproof housing for TEMPOMATIC WCs

Ref. 464SBOX

Mains supply, Kit 1/2




DESCRIPTION

Recessed waterproof housing for TEMPOMATIC WCs - Ref. 464SBOX

Recessed waterproof housing, kit 1/2:
 Flush system without cistern: directly connected to pipework.
 Compatible with 230/6V mains supply (cable and transformer supplied).
 Collar with waterproof seal.
 Hydraulic connection to the outside and maintenance from the front.
 Adjusts to all types of installation (rails, solid walls, panels).
 Compatible with wall finishes from 10 - 120mm (while maintaining the minimum recessing depth of 93mm).
 Suitable for standard or "pipe-in-pipe" supply.
 Stopcock and flow rate adjustment, activation and electronic unit are all integrated and accessible from the front.
 Backflow prevention device inside the housing.
 Secure system flush without sensitive elements.
 Outlet connection for PVC tube $\varnothing 26/32$ mm.
 30-year warranty.
 Order with control-plate with references 464000, 464050, 465000 or 465050.

TECHNICAL CHARACTERISTICS

Recessed waterproof housing for TEMPOMATIC WCs - Ref. 464SBOX

Connector	F $\frac{3}{4}$ "
Height	150mm
Depth	93 to 190mm
Width	225mm
Norms	 
Warranty	

ADVANTAGES



Recessed installation is easy



100% waterproof housing



Adapt to wall thickness



Compatible with mains supply

