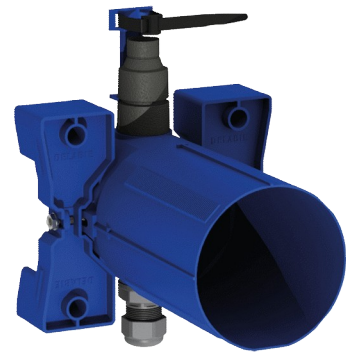


Recessed waterproof housing for TEMPOFLUX urinal

Ref. 778BOX

For urinals with flexibles 1/2" or Ø 35mm connections



DESCRIPTION

Recessed waterproof housing for TEMPOFLUX urinal - Ref. 778BOX

Recessed waterproof housing for urinals 1/2", kit 1/2:

Collar with waterproof seal.

Hydraulic connection to the outside and maintenance from the front.

Adjusts to all types of installation (rails, solid walls, panels).

Compatible with wall finishes from 10 - 120mm (while maintaining the minimum recessing depth of 83mm).

Suitable for standard or "pipe-in-pipe" supply.

Stopcock and flow rate adjustment, filter and cartridge all integrated and accessible from the front.

TEMPOFLUX F1/2" flush valve is compatible with sea water and grey water.

Protected waterproof housing, valve with secure system flush without sensitive elements and connection accessories.

Complies with European standard EN 12541 (class II acoustic level).

Connection with Ø 35mm connection washer (for standard urinals) or 1/2" brass connection (for urinals supplied by flexible).



For use with neck tube ref. 752430 or 757430.

30-year warranty.

Order with control plate references 778700 or 778707.

TECHNICAL CHARACTERISTICS

Recessed waterproof housing for TEMPOFLUX urinal - Ref. 778BOX

Connector	1/2"
Technology	Time flow
Height	145mm
Depth	83 - 190mm
Width	145mm
Norms	
Warranty	

ADVANTAGES



Easy to install



Housing is adjustable and modular



100% waterproof housing



Compatibility: rails, solid walls and panels

