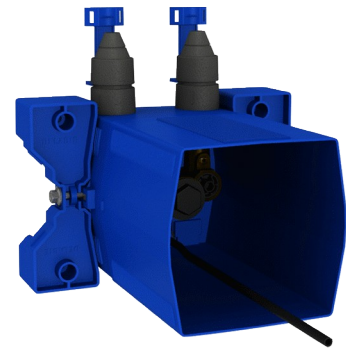


Recessed waterproof housing for TEMPOMIX 3 basin controls

Ref. 794BOX3

Waterproof, kit 1/2



DESCRIPTION

Recessed waterproof housing for TEMPOMIX 3 basin controls - Ref. 794BOX3

Waterproof recessed housing for TEMPOMIX 3 basin water controls, kit 1/2:




- Collar with waterproof seal.
- Hydraulic connection from the outside and maintenance from the front.
- Adjusts to all types of installations (rails, solid walls, panels).
- Compatible with wall finishes 10 - 120mm (while maintaining the minimum recessing depth of 93mm).
- Suitable for standard or "pipe in pipe" supply.
- Stopcocks and flow rate adjustment, filters, non-return valves and cartridge are all integrated and accessible from the front.
- TEMPOMIX 3 single control mixer F $\frac{1}{2}$ ".
- Supplied in 2 kits: secure system flush without sensitive elements.

30-year warranty.

Order with control plates references 794200 or 794250.

TECHNICAL CHARACTERISTICS

Recessed waterproof housing for TEMPOMIX 3 basin controls - Ref. 794BOX3

| | |
|--------------|---|
| Connector | F $\frac{1}{2}$ " |
| Technology | Time flow |
| Height | 150mm |
| Depth | 93 - 190mm |
| Width | 160mm |
| Spout length | 110mm |
| Flow rate | 3 lpm |
| Norms | ACS   |
| Warranty |  |

ADVANTAGES



Installation recessed in wall



Waterproof housing is adjustable and modular



100% waterproof housing

