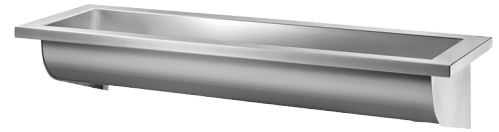


Wall-mounted CANAL wash trough

Ref. 120310

Polished satin 304 stainless steel - L. 3000mm



DESCRIPTION

Wall-mounted CANAL wash trough - Ref. 120310

Wall-mounted wash trough for wall-mounting for, 5 services - 3,000mm.
Bacteriostatic 304 stainless steel.

Polished satin finish.

Stainless steel thickness: 0.8mm for the bowl, 1.5mm for surround and fixing brackets.

Easy to install: no joint concealers to install, lightweight trough.

Water control can be wall-mounted or deck-mounted.

Drainage on the right.

Without tap hole.

Supplied with 1½" waste. Without overflow.

Supplied with fixing elements.

CE marked. Complies with European standard EN 14296.

Weight: 15.6kg.

30-year warranty.

Option to add a bacteriostatic 304 stainless steel splashback (ref. 100310).

ADVANTAGES



Bacteriostatic 304 stainless steel,
smooth surface

TECHNICAL CHARACTERISTICS

Wall-mounted CANAL wash trough - Ref. 120310

| | |
|-----------|--|
| Height | 250mm |
| Length | 3000mm |
| Width | 400mm |
| Thickness | 1mm (bowl) and 1.5mm (surround and fixing brackets) |
| Finish | Polished satin 304 stainless steel |
| Norms | CE  |
| Warranty |  |

