

SECURITHERM BIOCLIP

thermostatic basin mixer

Ref. H960515

Single hole sequential thermostatic mixer H. 95mm L. 120mm



DESCRIPTION

SECURITHERM BIOCLIP thermostatic basin mixer - Ref. H960515

Deck-mounted SECURITHERM thermostatic basin mixer.
 Sequential thermostatic mixer: opens and closes with cold water.
 No risk of cross flow between the hot and cold water.
 No non-return valve.
 BIOCLIP: mixer can be easily removed for cleaning and disinfection.
 Anti-scalding failsafe: shuts off automatically if cold or hot water supply fails.
 Securitouch thermal insulation prevents burns.
 Single hole mixer with curved spout, H. 95mm L. 120mm, fitted with a hygienic flow straightener, no build-up of impurities and withstands thermal shocks.
 Scale-resistant sequential thermostatic cartridge for single control adjustment of flow rate and temperature.
 Temperature adjusts from cold water up to 40°C with maximum temperature limiter set at 40°C.
 Thermal and chemical shocks are possible.
 Body and spout with smooth interiors and low water volume.
 Flow rate limited to 5 lpm at 3 bar.
 No manual contact thanks to Hygiene control lever L. 146mm.
 No pop-up waste.
 Supplied with F3/8" PEX flexibles with chrome-plated brass stopcocks, filters and Ø 15mm conical connectors.
 Fixing reinforced via 2 stainless steel rods.
 Mixer ideal for healthcare facilities, retirement and care homes , hospitals and clinics.
 Mixer suitable for people with reduced mobility.
 30-year warranty.
 Also available with copper tails.

ADVANTAGES



Maximum hygiene: mixer with no non-return valves



Hygiene: can be removed for internal cleaning





SECURITHERM: optimal anti-scalding safety

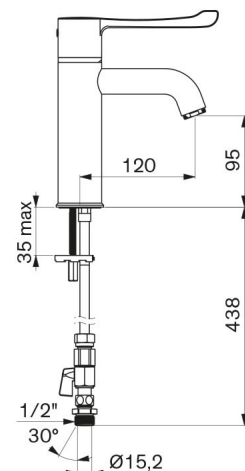


Sequential: opens/closes with cold water

TECHNICAL CHARACTERISTICS

SECURITHERM BIOCLIP thermostatic basin mixer - Ref. H960515

Connector	M1/2", Ø 15mm
Technology	SECURITHERM BIOCLIP sequential thermostatic mixer
Drop height	95mm
Spout length	120mm
Flow rate	5 lpm at 3 bar
Temperature limiter	Yes
Finish	Chrome-plated brass
Norms	 



Warranty



Repairability

