

# White anti-bacterial Nylon drop-down rail, L. 650mm, with leg

Ref. 5162N

Bright white NylonClean anti-bacterial HR Nylon



## DESCRIPTION

**White anti-bacterial Nylon drop-down rail, L. 650mm, with leg - Ref. 5162N**

Drop-down grab bar Ø 32mm with leg, for people with reduced mobility.  
 Drop-down grab bar for WCs or showers.  
 Allows side access in the raised position.  
 In the lowered position use as a grab bar, as a support for standing up and for assisting movement.  
 Retained in upright position. Slowed descent.  
 Drop-down grab bar made from bright white HR Nylon.  
 NylonClean anti-bacterial treatment: optimal protection against bacterial and mould development.  
 Model with automatic folding leg. To be used as reinforcement when the wall fixing alone is insufficient.  
 Leg height can be adjusted from 760 – 780mm.  
 Suitable for intensive use in public places or the healthcare sector.  
 High-strength polyamide (Nylon) and polymer: with 2mm reinforced steel core treated against corrosion.  
 Uniform non-porous surface for easy maintenance and hygiene.  
 Good resistance to chemical products and cleaning.  
 Anti-UV treatment: prevents yellowing.  
 Warm to the touch.  
 Fixings concealed by a 4mm thick 304 stainless steel cover plate.  
 Supplied with stainless steel screws for concrete walls.  
 Dimensions: 650 x 800 x 105mm.  
 Tested to over 200kg. Maximum recommended user weight 135kg.  
 30-year warranty.  
 CE marked.

## TECHNICAL CHARACTERISTICS

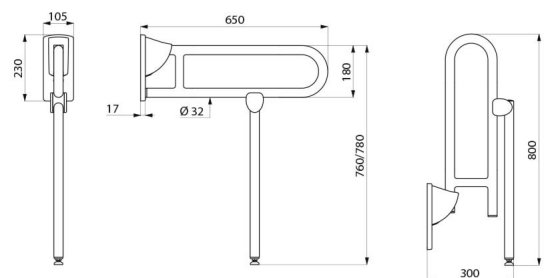
**White anti-bacterial Nylon drop-down rail, L. 650mm, with leg - Ref. 5162N**

Height	800mm, drop-down rail from 760 to 780mm
Length	650mm
Width	105mm
Diameter	32mm
Thickness	Nylon: 3.5mm; Steel: 2mm
Finish	Bright white anti-bacterial HR Nylon
Norms	 



## ADVANTAGES

-  NylonClean anti-bacterial treatment
-  Tested to over 200kg
-  HR Nylon: smooth surface, easy to clean
-  Good resistance to chemical products and cleaning



---

Warranty

